

Supplemental Figures:

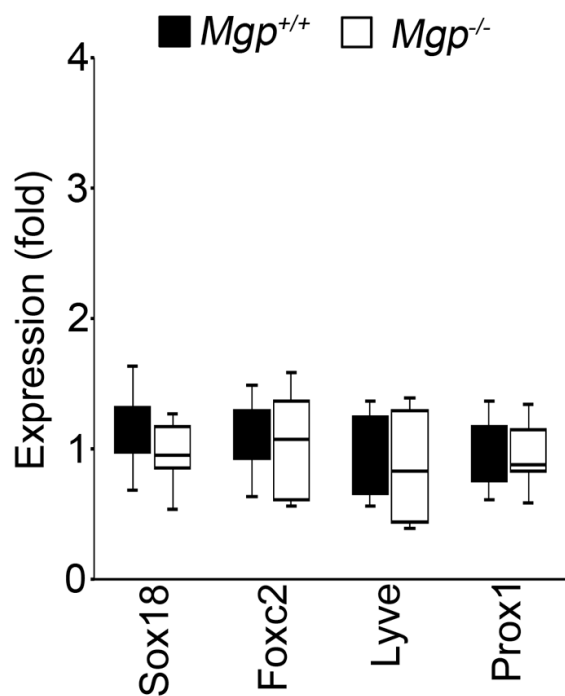


Figure S1

Expression of lymphatic endothelial markers

The expression of the lymphatic endothelial markers Prox1, Foxc2, Sox18, and Lyve1 in *Mgp*^{-/-} and *Mgp*^{+/+} cerebral ECs as determined by real-time-PCR (n=5). Data were analyzed by Student's t test, and shown by box and whisker plots. The bounds of the boxes are upper and lower quartiles. The line in the box is median and the whiskers are the maximum and minimal values.

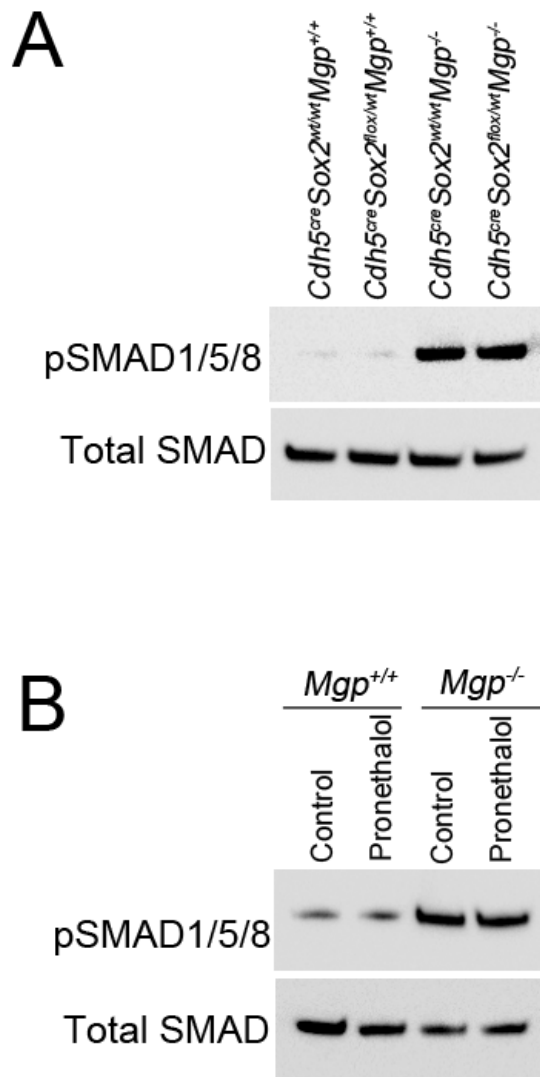


Figure S2

Levels of pSMAD1/5/8 and total SMAD by Immunoblotting

(A) Levels of pSMAD1/5/8 and total SMAD in isolated cerebral ECs as determined by immunoblotting (n=5).

(B) Levels of pSMAD1/5/8 and total SMAD in cerebral ECs isolated from wild type (*Mgp^{+/+}*) or *Mgp^{-/-}* mice with or without treatment of pronethalol (n=5).