

Supplementary materials**Antibiotic Pretreatment Alleviates Liver Transplant Damage in Mouse and Man**

Kojiro Nakamura^{1*}, Shoichi Kageyama^{1*}, Takahiro Ito^{1*}, Hirofumi Hirao^{1*}, Kentaro Kadono¹, Antony Aziz¹, Kenneth J. Dery¹, Matthew J. Everly², Kojiro Taura³, Shinji Uemoto³, Douglas G. Farmer¹, Fady M. Kaldas¹, Ronald W. Busuttil¹ and Jerzy W. Kupiec-Weglinski¹

¹ The Dumont-UCLA Transplantation Center, Department of Surgery, Division of Liver and Pancreas Transplantation, David Geffen School of Medicine at UCLA, Los Angeles, CA 90095, USA

² The Terasaki Research Institute, Los Angeles, CA 90024, USA

³ Department of Surgery, Graduate School of Medicine, Kyoto University, Kyoto, Japan

*These authors contributed equally

Table of contents

Supplementary table 1.....	2
Supplementary table 2.....	3
Supplementary table 3.....	4
Supplementary table 4.....	5
Supplementary table 5.....	6
Supplementary table 6.....	7
Supplementary table 7.....	8
Supplementary table 8.....	9
Supplementary table 9.....	10
Supplementary figure 1.....	11
Supplementary figure 2.....	12

Recipients' peri-operative variables (biopsied 52 cases)

Variables	Control (n=24)	Abx (n=28)	p value
Age (years)	60 (29-73)	52 (23-71)	0.008
Gender (M/F)	18 (75.0%) / 6 (25.0%)	18 (64.3%) / 10 (35.7%)	0.549
Race			0.102
White	8 (33.3%)	13 (46.4%)	
Hispanic	8 (33.3%)	11 (39.3%)	
Black	1 (4.2%)	2 (7.1%)	
Asian	5 (20.8%)	0	
Others	2 (8.3%)	1 (3.6%)	
Height (cm)	170.2 (149.9-182.9)	176.3 (152.0-195.6)	0.120
BMI (kg/m ²)	26.2 (16.6-38.3)	28.7 (14.5-47.5)	0.086
Past History			
Smoking	14 (58.3%)	11 (39.2%)	0.266
Diabetes	9 (37.5%)	9 (32.1%)	0.774
Hypertention	11 (45.8%)	8 (28.6%)	0.253
Heart disease	4 (16.7%)	3 (10.75)	0.690
Abdominal surgery	9 (37.5%)	8 (28.6%)	0.562
Disease etiology			0.125
HBV	2 (8.3%)	0	
HCV	14 (58.3%)	11 (39.3%)	
EtOH	1 (4.2%)	7 (25.0%)	
Cryptogenic cirrhosis / NASH	4 (16.7%)	7 (25.0%)	
ALF	0	1 (3.6%)	
Others	3 (12.5%)	2 (7.1%)	
HCC (with/without)	16 (66.7%) / 8 (33.3%)	4 (14.3%) / 24 (85.7%)	<0.001
ABO			0.590
identical	22 (91.7%)	27 (96.4%)	
compatible	2 (8.3%)	1 (3.6%)	
MELD score	15 (6-42)	37 (16-47)	<0.001
Pre-transplant AST (IU/L)	56.0 (23-268)	58.5 (23-283)	0.601
Pre-transplant ALT (IU/L)	50 (15-299)	29.5 (11-217)	0.189
Abx use during OLT			0.833
ampicillin-sulbactam	18 (75.0%)	19 (67.9%)	
piperacillin/tazobactam	3 (12.5%)	4 (14.3%)	
Others	3 (12.5%)	5 (17.9%)	
Post-OLT Abx use within 7 days	14 (58.3%)	20 (71.4%)	0.388
Post-OLT Basiliximab use	10 (41.7%)	19 (67.9%)	0.093

Table S1: Recipients' peri-operative variables (biopsied 52 cases)

Donors' and grafts' parameters (biopsied 52 cases)

Variables	Control (n=24)	Abx (n=28)	p value
Age (years)	44.5 (7-65)	34 (13-67)	0.142
Gender (M/F)	10 (41.7%) / 14 (58.3%)	16 (57.1%) / 12 (42.9%)	0.404
Race			0.225
White	14 (58.3%)	16 (57.1%)	
Hispanic	8 (33.3%)	9 (32.1%)	
Black	2 (8.3%)	0	
Asian	0	3 (10.7%)	
Others	0	0	
Height (cm)	167.5 (131.0-187.9)	170.1 (152.4-190.0)	0.357
BMI (kg/m ²)	25.6 (13.4-42.6)	27.0 (19.6-34.9)	0.709
Pre-transplant AST (IU/L)	43.5 (12-314)	43 (13-189)	0.912
Pre-transplant ALT (IU/L)	24 (11-403)	28 (8-730)	0.978
T-Bil (g/dl)	0.7 (0.2-4.9)	0.7 (0.3-1.9)	0.599
PT-INR	1.25 (1-2.0)	1.2 (1-1.8)	0.688
Warm ischemia time (min)	52.5 (23-79)	53.0 (29-78)	0.818
Cold ischemic time (min)	485.5 (328-762)	434 (150-747)	0.177
Donor Abx use (yes/ no or unknown)	16 (66.7%) / 8 (33.3%)	16 (57.1%) / 12 (42.9%)	0.573
Donation status (DCD / DBD)	1 (4.2%)	2 (7.1%)	0.566

Table S2: Donors' and grafts' parameters (biopsied 52 cases)

Recipients' preoperative status and surgical parameters (264 cases, October/2013-August/2015)

Variables	Control (n=108)	Abx (n=156)	p value
Pre-OLT blood culture positive	3 (2.8%)	31 (19.9%)	<0.001
Pre-operative hospital stay (days)	1 (0-136)	15 (0-152)	<0.001
Pre-operative ICU stay (days)	0 (0-72)	5 (0-145)	<0.001
RBC transfused during surgery(ml)	3375 (500-26000)	6000 (1250-30750)	<0.001
FFP transfused during surgery(ml)	3875 (0-28750)	6000 (110-25000)	<0.001
PLT transfused during surgery(ml)	2341 (0-1195)	462 (0-1877)	<0.001

Table S3: Recipients' preoperative status and surgical parameters (264 cases, October/2013-August/2015)

Donors' and grafts' parameters (264 cases, October/2013-August/2015)

Variables	Control (n=108)	Abx (n=156)	p value
Age (years)	39 (7-76)	36.5 (13-72)	0.306
Gender (M/F)	70 (64.8%) / 38 (35.2%)	94 (60.3%) / 62 (39.7%)	0.519
Race			0.482
White	63 (58.3%)	88 (56.4%)	
Hispanic	31 (28.7%)	48 (30.8%)	
Black	4 (3.7%)	12 (7.7%)	
Asian	8 (7.4%)	6 (3.8%)	
Others	2 (1.9%)	2 (1.3%)	
Height (cm)	172.7 (131.0-196.0)	170.2 (134.6-198.0)	0.260
BMI (kg/m ²)	25.6 (13.4-44.4)	26.5 (17.0-49.6)	0.459
Pre-transplant AST (IU/L)	37.0 (10-314)	39.5 (8-669)	0.584
Pre-transplant ALT (IU/L)	29 (8-403)	33 (6-730)	0.357
T-Bil (g/dl)	0.7 (0.1-11.5)	0.7 (0.2-3.5)	0.111
PT-INR	1.2 (0.9-4.7)	1.2 (0.9-2.8)	0.420
Warm ischemia time (min)	48 (23-79)	49 (20-81)	0.546
Cold ischemic time (min)	445 (147-878)	443.5 (138-817)	0.876
Donor Abx use (yes/ no or unknown)	54 (50.0%) / 54 (50.0%)	86 (55.1%) / 70 (44.9%)	0.453
Donation status (DCD / DBD)	4 (3.7%) / 104 (96.3%)	8 (5.1%) / 148 (94.9%)	0.766

Table S4: Donors' and grafts' parameters (264 cases, October/2013-August/2015)

Incidence of post-OLT infection (264 cases, October/2013-August/2015)

Variables	Control (n=108)	Abx (n=156)	p value
SSI (grade \geq IIIb)	7 (6.5%)	2 (1.3%)	0.317
Post-OLT blood culture positive	4 (3.7%)	11 (7.1%)	0.291

Table S5: Incidence of post-OLT infection (264 cases, October/2013-August/2015)

Recipients' preoperative status and surgical parameters (180 cases in rifaximin study, May /2013-April /2016)

Variables	Control (n=123)	RFX (n=57)	p value
Pre-OLT blood culture positive	0	0	NA
Pre-operative hospital stay (days)	1 (0-136)	1 (0-72)	0.012
Pre-operative ICU stay (days)	0 (0-11)	0 (0-27)	0.912
RBC transfused during surgery(ml)	2750 (250-14500)	5250 (750-30750)	<0.001
FFP transfused during surgery(ml)	3500 (0-13750)	5500 (750-25000)	<0.001
PLT transfused during surgery(ml)	230 (0-1195)	400 (0-1877)	0.001

Table S6: Recipients' preoperative status and surgical parameters (180 cases in rifaximin study, May /2013-April /2016)

Donor and graft parameters (180 cases in rifaximin study, May /2013-April /2016)

Variables	Control (n=123)	Rifaximin (n=57)	p value
Age (years)	39 (7-76)	35 (12-70)	0.782
Gender (M/F)	75 (61.0%) / 48 (39.0%)	36 (63.2%) / 21 (36.8%)	0.869
Race			0.008
White	65 (52.8%)	29 (50.9%)	
Hispanic	37 (30.1%)	13 (22.8%)	
Black	10 (8.1%)	13 (22.8%)	
Asian	10 (8.1%)	0	
Others	1 (0.8%)	2 (3.5%)	
Height (cm)	170.2 (124.5-196.0)	173.0 (152.4-198.0)	0.277
BMI (kg/m ²)	25.7 (13.4-47.58)	25.4 (18.5-49.6)	0.936
Pre-transplant AST (IU/L)	40 (9-267)	47 (13-747)	0.244
Pre-transplant ALT (IU/L)	32 (10-245)	37 (9-280)	0.661
T-Bil (g/dl)	0.8 (0.2-11.5)	0.7 (0.2-2.7)	0.890
PT-INR	1.2 (0.9-2.2)	1.2 (0.9-2.8)	0.627
Warm ischemia time (min)	48 (23-138)	49 (27-81)	0.342
Cold ischemic time (min)	440 (163-878)	418 (210-760)	0.374
Donor Abx use (yes/ no or unknown)	67 (54.5%)	36 (63.2%)	0.332
Donation status (DCD / DBD)	6 (3.8%)	3 (6.1%)	0.492

Table S7: Donor and graft parameters (180 cases in rifaximin study, May /2013-April /2016)

Incidence of post-OLT infection (180 cases in rifaximin study, May /2013-April /2016)

Variables	Control (n=123)	RFX (n=57)	p value
SSI (grade \geq IIIb)	5 (4.1%)	2 (3.5%)	>0.999
Post-OLT blood culture positive	6 (4.9%)	1 (1.8%)	0.434

Table S8: Incidence of post-OLT infection (180 cases in rifaximin study, May /2013-April /2016)

Table S9: Primer Sequences Used for Real-Time Quantitative PCR

Gene	Forward	Reverse
Mouse CD68	5'-CCATCCTTCACGATGACACCT-3'	5'-GGCAGGGTTATGAGTGACAGTT-3'
Mouse Ly6G	5'-TGGACTCTCACAGAAGCAAAG-3'	5'-GCAGAGGTCTTCCTTCCAACA-3'
Mouse MCP1	5'-CATCCACGTGTTGGCTCA-3'	5'-GATCATCTTGCTGGTGAATGAGT-3'
Mouse CXCL2	5'-ACTTCAAGAACATCCAGAG-3'	5'-CTTTCCAGGTCAGTTAGC-3'
Mouse CXCL10	5'-GCTGCCGTCATTTTCTGC-3'	5'-TCTCACTGGCCCGTCATC-3'
Mouse EP4	5'-ACCATTCTAGATCGAACCGT-3'	5'-CACCACCCCGAAGATGAACAT-3'
Mouse HPRT	5'-TCAACGGGGGACATAAAAAGT-3'	5'-TGCATTGTTTTACCAGTGTCAA-3'
Mouse TBP	5'-GGGGAGCTGTGATGTGAAGT-3'	5'-CCAGGAAATAATTCTGGCTCA-3'
Human CD68	5'-GGAAATGCCACGGTTCATCCA-3'	5'-TGGGGTTCAGTACAGAGATGC-3'
Human Cathepsin G	5'-GAGTCAGACGGAATCGAAACG-3'	5'-CGGAGTGTATCTGTTCCCCTC-3'
Human GAPDH	5'-GGAGCGAGATCCCTCCAAAAT-3'	5'-GGCTGTTGTCATACTTCTCATGG-3'

Fig. S1

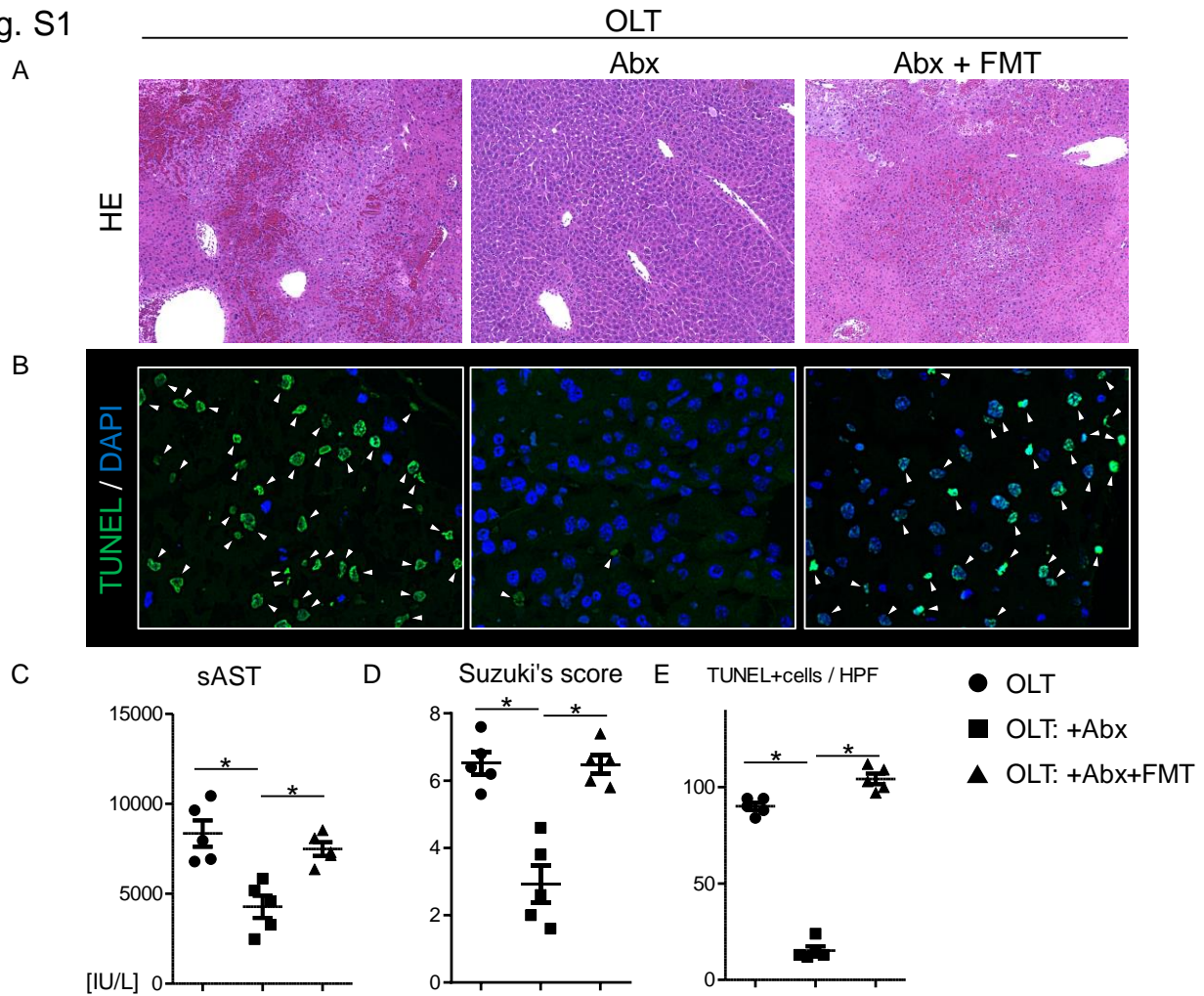


Figure S1: Fecal microbiota transfer (FMT) recreates liver IRI in Abx pretreated OLT recipients.

BALB/c livers subjected to 18h of cold storage were transplanted orthotopically to C57BL/6 mice, followed by serum/liver sampling at 6h post-OLT. Some OLT recipient were treated with Abx on days -11 to -1, and then administered with (Abx+FMT) or without (Abx) fecal samples on day -1 and 0 by gavage. **(A)** Representative H&E staining (original magnification, x100). **(B)** Representative TUNEL staining (original magnification, x200). Arrowheads indicate TUNEL-positive dead cells. **(C)** Serum AST levels (IU/L, n=5/group). **(D)** Suzuki's histological grading of liver IRI (n=5/group). **(E)** Quantification of TUNEL-positive cells/HPF (n=5/group). Data shown in dot plots and bars indicate mean±SEM (*p<0.01, 1-way ANOVA followed by Tukey's HSD test).

Fig. S2

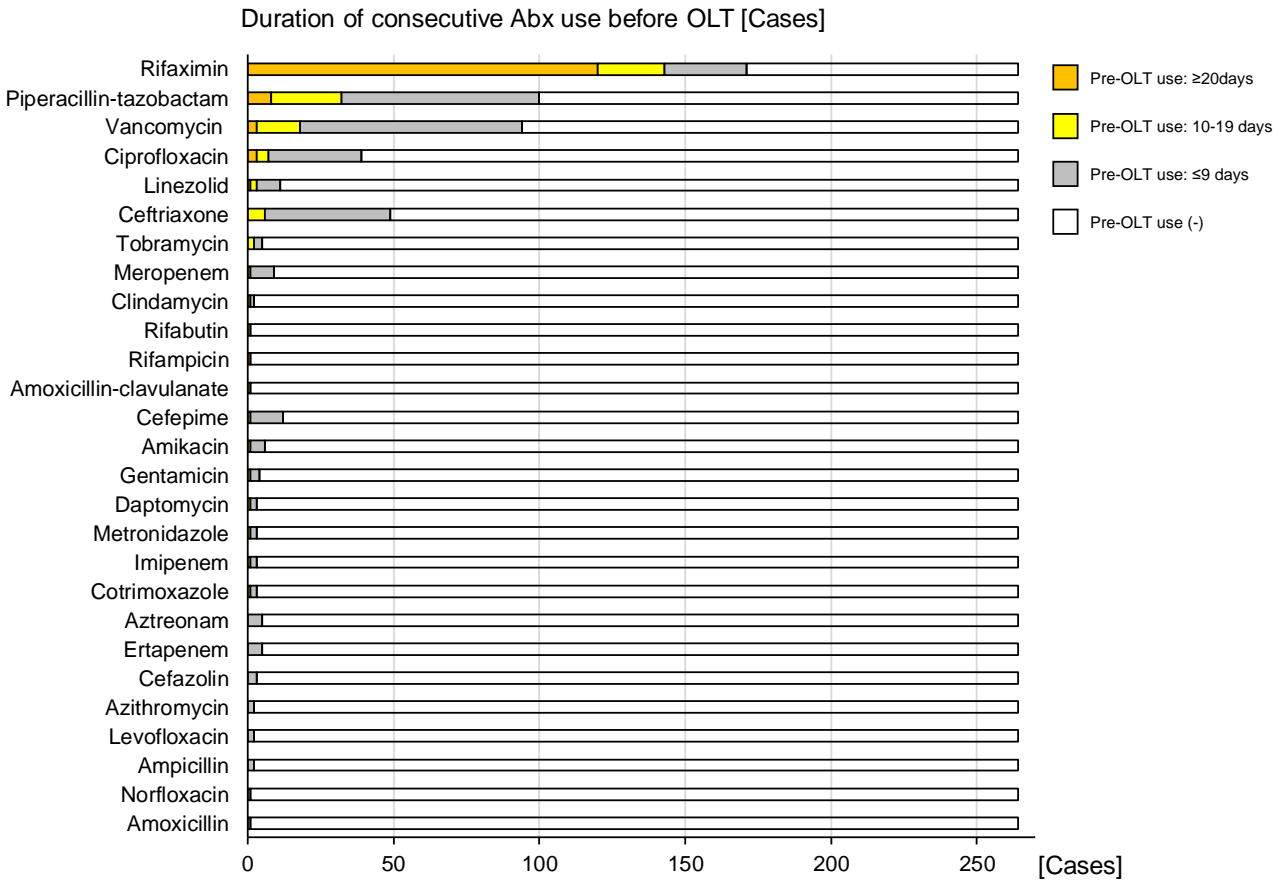


Figure S2: Duration of consecutive Abx use prior to OLT in 264 recipients.

Twenty-seven different Abx were used in primary OLT patients (n=264; October 2013-August 2015). Number of treated cases and consecutive treatment periods are shown with respect to each Abx modality.