

Opposite effects of cyclooxygenase-1 and -2 activity on the pressor response to angiotensin II

Qi Zhonghua, ... , Jason D. Morrow, Matthew D. Breyer

J Clin Invest. 2002;110(3):419-419. <https://doi.org/10.1172/JCI14752C1>.

Corrigendum

Vascular biology

J. Clin. Invest. 110:61–69 (2002) doi:10.1172/JCI14752. In the final stages of the production process, an error was introduced into Figure 4. The correct version of the figure and the legend appear below. Figure 4 Distribution of COX1 and COX2 in mouse kidney. COX1 immunoreactivity in mouse outer medulla and papilla (a and b). COX2 immunoreactivity in cortex and medulla, respectively (c and d). Arrows indicate a vascular bundle in a and an intermediate-size arteriole in c.

Find the latest version:

<http://jci.me/14752C1-pdf>



Opposite effects of cyclooxygenase-1 and -2 activity on the pressor response to angiotensin II

Zhonghua Qi, Chuan-Ming Hao, Robert I. Langenbach, Richard M. Breyer, Reyadh Redha, Jason D. Morrow, and Matthew D. Breyer

J. Clin. Invest. **110**:61–69 (2002). doi:10.1172/JCI200214752.

In the final stages of the production process, an error was introduced into Figure 4. The correct version of the figure and the legend appear below.

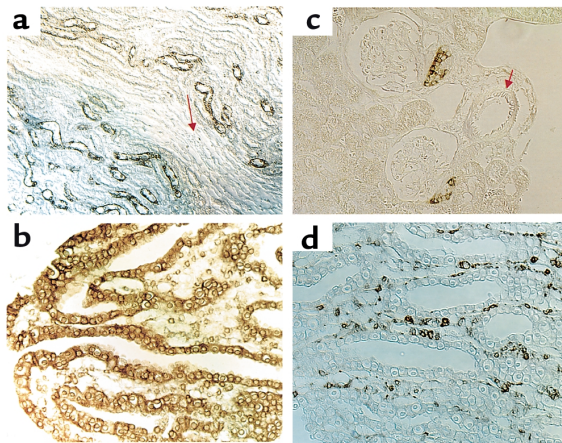


Figure 4

Distribution of COX1 and COX2 in mouse kidney. COX1 immunoreactivity in mouse outer medulla and papilla (**a** and **b**). COX2 immunoreactivity in cortex and medulla, respectively (**c** and **d**). Arrows indicate a vascular bundle in **a** and an intermediate-size arteriole in **c**.