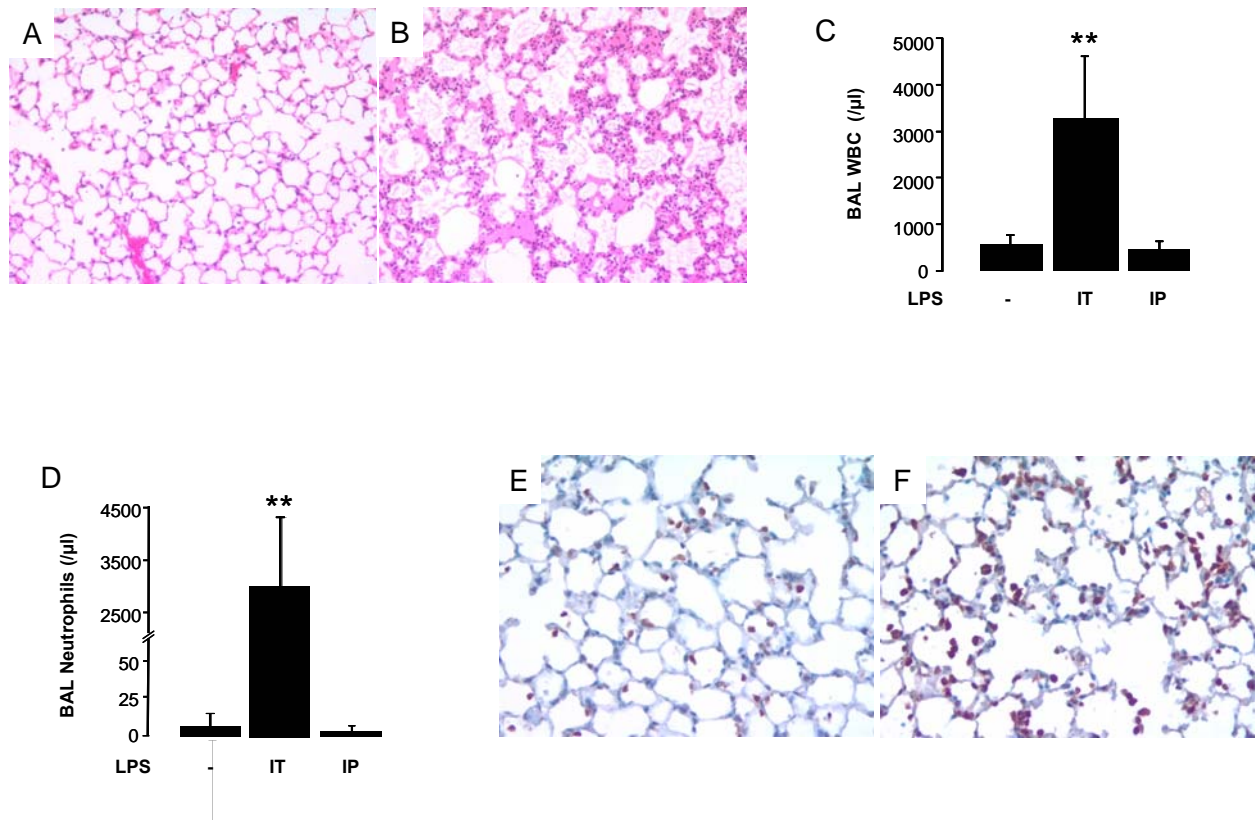
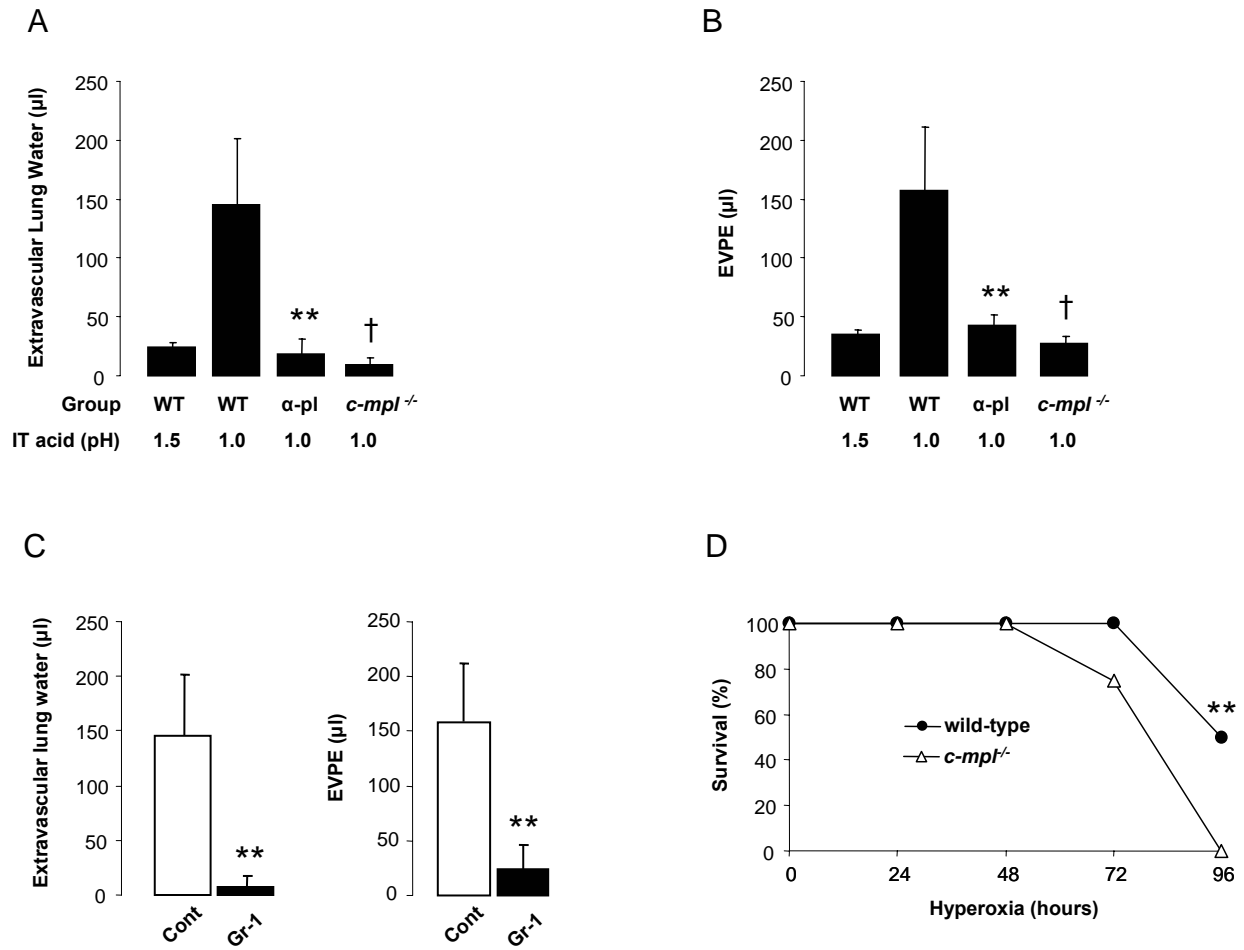


Supplemental Figure 1



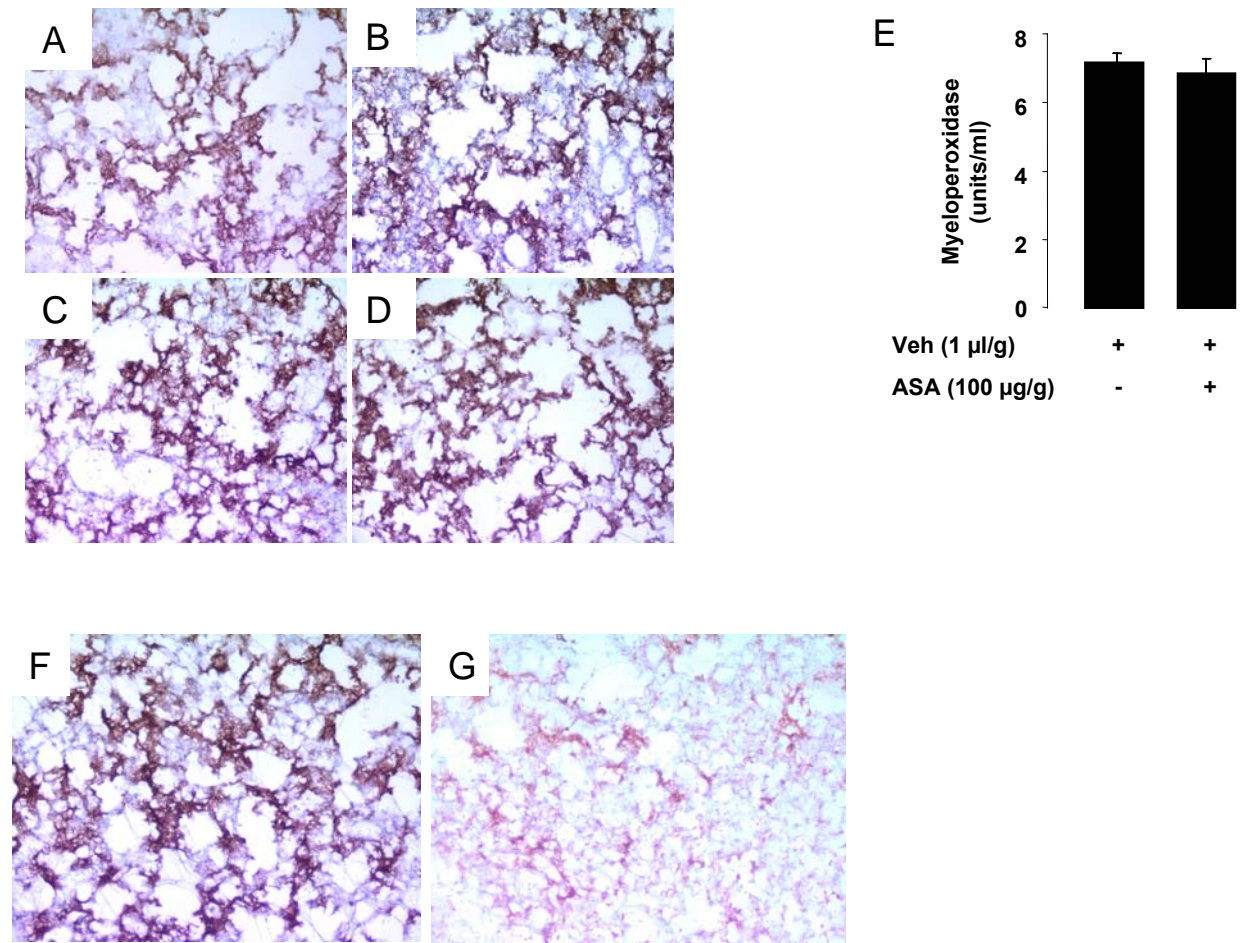
Supplemental Figure 1. Histology, BAL cytology, and Gr-1 immunohistochemistry in two-event TRALI with i.t. LPS priming. **(A-B)** Lung sections from mice administered i.t. LPS (24h @ 0.1 mg/kg) **(A)**, and i.t. LPS (0.1 mg/kg) + MHC I mAb (4.5 mg/kg) at 2h post-injection. **(B)**. H&E, magnification x200. **(C-D)** BAL white blood cells **(C)** and neutrophils **(D)** in control mice and mice challenged with either i.t. or i.p. LPS (0.1 mg/kg, respectively). Note interrupted y-axis in **(D)**. ** $p < 0.05$ vs. control and i.p. LPS. **(E-F)** Gr-1 mAb immunostaining in mice administered i.t. LPS (24h @ 0.1 mg/kg) **(E)** and i.t. LPS (0.1 mg/kg) + MHC I mAb (4.5 mg/kg) 2h post-injection **(F)**. Magnification, x400.

Supplemental Figure 2



Supplemental Figure 2. Platelet and neutrophil depletion protect mice from acid-induced ALI. Platelet depletion fails to protect from hyperoxic ALI. **(A-B)** Extravascular lung water and EVPE at 4h in C57BL/6 WT mice ± platelet depletion and *c-mpl*^{-/-} mice challenged with i.t. acid (3 µl/g, pH 1.5 or 1.0). **, †p<0.05 vs. WT (pH 1.0). **(C)** C57BL/6 WT mice administered Gr-1 mAb vs. isotype control mAb prior to i.t. acid (pH 1.0) and killed at 4h. **p<0.05 vs. control. **(D)** Survival curves from WT C57BL/6 mice and *c-mpl*^{-/-} continuously exposed to >95% oxygen in a sealed plexiglass chamber. **p<0.05 vs. *c-mpl*^{-/-}.

Supplemental Figure 3.



Supplemental Figure 3. Platelet immunostaining and lung myeloperoxidase content in two-event TRALI. (A-B) Lung CD41 immunostaining in mice from Figure 10A administered isotype control (A) or P-selectin mAb (B) prior to two-event TRALI. (C-D) Lung CD41 immunostaining in WT (C) or *CD18^{-/-}* mice (D) from Figure 10C. (E) Lung myeloperoxidase content in mice from Figure 11 with two-event TRALI and treated with vehicle alone (DMSO) vs. vehicle + ASA. (F-G) Lung CD41 immunostaining in mice from two-event TRALI treated with vehicle alone (DMSO) (F) vs. vehicle + ASA (G). Magnification, x200 for all images.