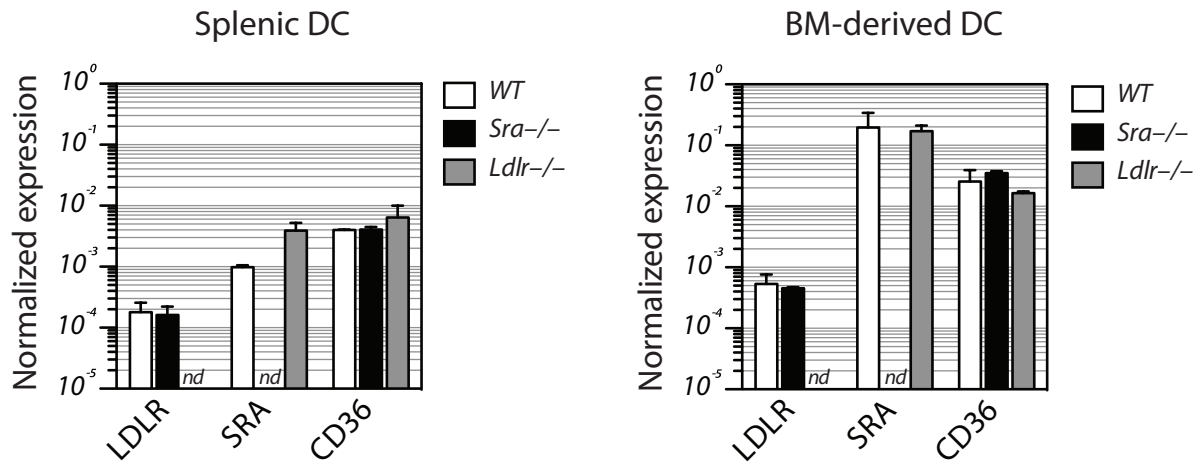


Supplemental Figure 1 Normal populations of conventional T cells in *SRA*^{-/-} and *LDLR*^{-/-} mice. Thymic and splenic lymphocytes of indicated mouse strains were characterized by flow cytometry after staining with specific antibodies for CD3, CD4 and CD8. Bar graphs depict the mean \pm SEM for groups of 4-6 mice from one of 2 independent experiments.

Freigang *et al.*, 2012



Supplemental Figure 2 Expression levels of lipid antigen receptors in APCs of *SRA*^{-/-} and *LDLR*^{-/-} mice. cDNA generated from ex vivo sorted splenic DCs and from in vitro generated BM-derived DCs was analyzed by quantitative PCR to compare the expression levels of LDLR, SRA and CD36. Values were normalized to β -actin expression. Bars represent the mean \pm SEM for triplicate determinations from one of 2 independent experiments.