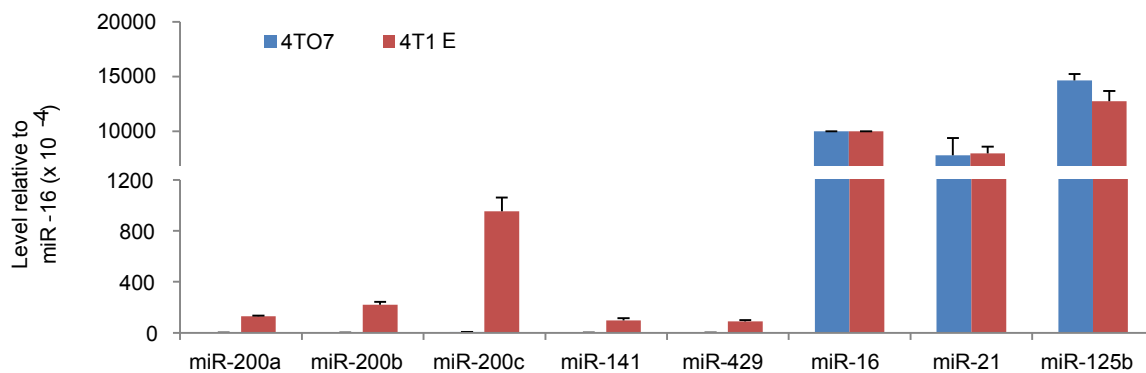


B Small Vesicles (< 200 nm)



Large vesicles (200 - 800 nm)

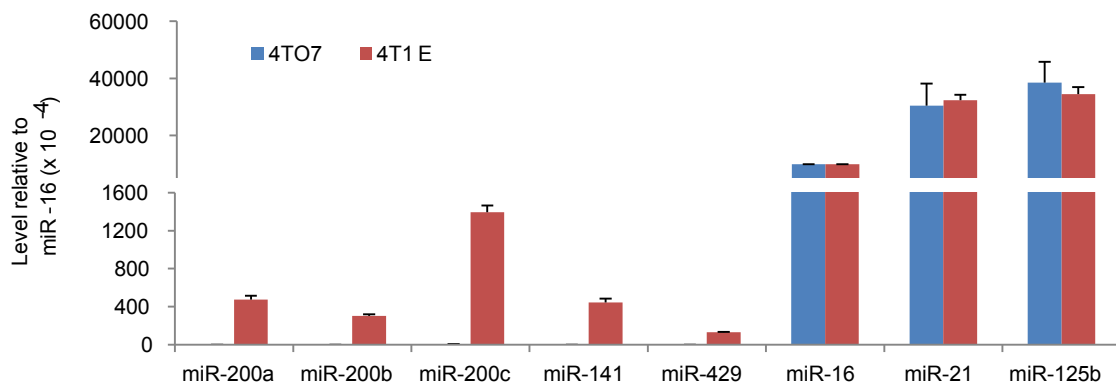


Figure S1. miR-200 miRNAs are secreted by metastatic 4T1E cells in extracellular vesicles. **(A)** Log₂ levels of selected miRNAs in four passages of 67NR, 4TO7 and 4T1E cells and their EVs (except 4TO7 cells with 2 passages). miRNA levels were quantified by the Firefly™ miRNA assay and normalized to miR-16. **(B)** The levels of selected miRNAs relative to miR-16 in small and large EVs purified from the culture supernatants of 4TO7 and 4T1E cells, quantified by Taqman® qRT-PCR (N = 3 experiments).

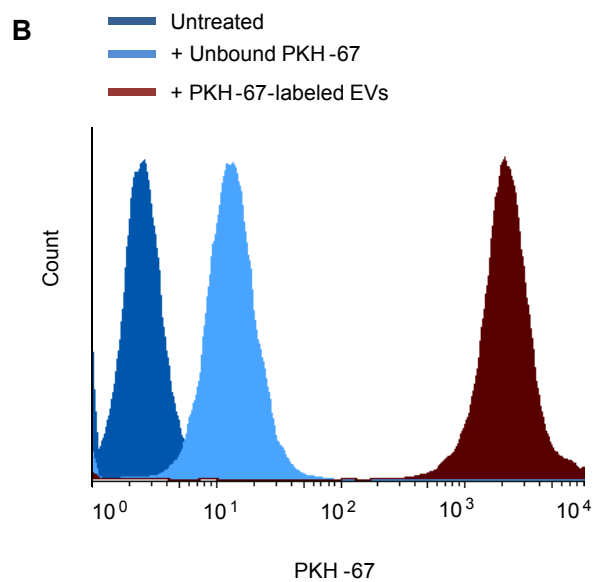
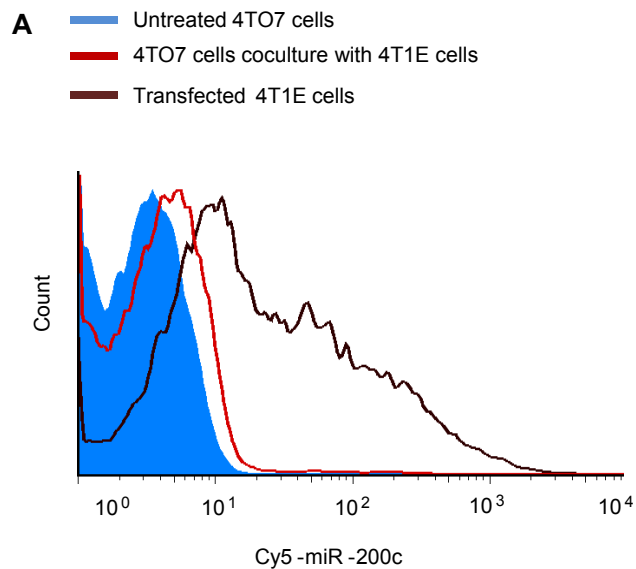


Figure S2. Transfer of miR-200s in EVs from 4T1E cells to 4TO7 cells. **(A)** Flow cytometry analysis of 4T1E cells that were transfected with 200 pmole Cy5-miR-200c and 4TO7 cells that were untreated or cocultured for 48 hours with transfected 4T1E cells in transwells. **(B)** Flow cytometry analysis of 4TO7 cells that were untreated or incubated for 24 hours with PKH-67-labeled EVs or with unbound PKH-67 dye in the second wash buffer obtained after EV staining.

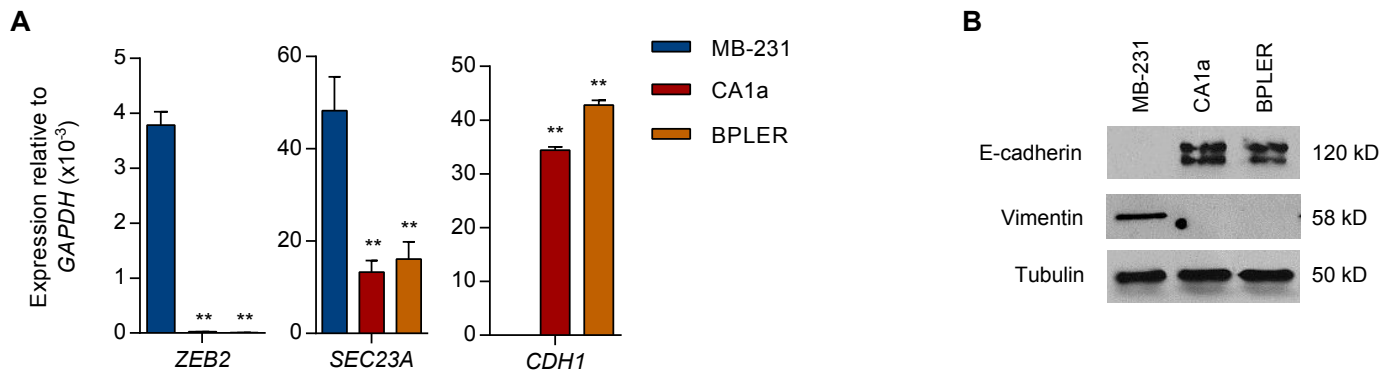


Figure S3 - Mesenchymal and epithelial gene expression in human breast cancer cells. **(A)** Expression of *ZEB2*, *SEC23A* and *CDH1* in MB-231, CA1a and BPLER cells, relative to *GAPDH*, quantified by Ssofast Evagreen qRT-PCR (N = 3 experiments). **(B)** Western blot analysis of E-cadherin, Vimentin and Tubulin proteins in MB-231, CA1a and BPLER cells. The approximate protein molecular weight of each protein is shown on the right.